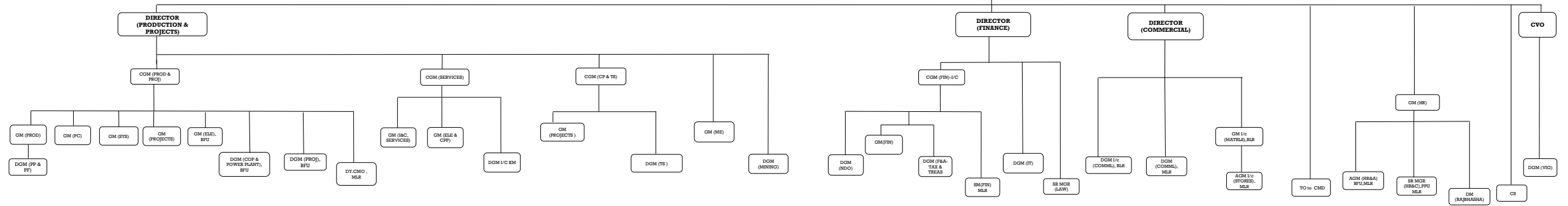


ORGANIZATION CHART OF KIOCL LIMITED



CHAIRMAN CUM MANAGING DIRECTOR



Abbreviations:

- CVO-CHIEF VIGILANCE OFFICER
- CGM(PROD&PROJ)- CHIEF GENERAL MANAGER (PRODUCTION & PROJECTS), MANGALORE
- GM(PROD)- GENERAL MANAGER (PRODUCTION), MANGALORE
- GM(PC)-GENERAL MANAGER (PROCESS CONTROL), MANGALORE
- GM (SYS)-GENERAL MANAGER (SYSTEM),MANGALORE
- GM(PROJ)-GENERAL MANAGER (PROJECTS), MANGALORE
- GM (ELE)- GENERAL MANAGER (ELECTRICAL BLAST FURNACE UNIT, MANGALORE
- DGM(COP & POWER PLANT)- DEPUTY GENERAL MANAGER (COKE OVEN PLANT & POWER PLANT), BLAST FURNACE UNIT, MANGALORE
- DGM(PROJECTS)- DEPUTY GENERAL MANAGER (PROJECTS), BLAST FURNACE UNIT, MANGALORE
- DY.CMO DEPUTY CHIEF MEDICAL OFFICER , MANGALORE
- CGM(SERVICES)- GENERAL MANAGER (SERVICES), MANGALORE
- GM (I&C, SERVICES)-GENERAL MANAGER (I&C, SERVICES), MANGALORE
- GM(ELE & CPP)- GENERAL MANAGER (ELECTRICAL & CAPTIVE POWER PLANT), MANGALORE
- DGM I/C-KM-DEPUTY GENERAL MANAGER INCHARGE KUDREMUKH
- CGM(CP & TS)- CHIEF GENERAL MANAGER (CORPORATE PLAN & TECHNICAL SERVICES), BANGALORE
- GM(PROJ)-GENERAL MANAGER (PROJECTS), BANGALORE
- DGM (TS)-DEPUTY GENERAL MANAGER (TECHNICAL SERVICES), BANGALORE
- GM(ME)-GENERAL MANAGER (MINERAL EXPLORATION), BANGALORE
- DGM(MINING)- DEPUTY GENERAL MANAGER(MINING), BANGALORE
- CGM (FIN)I/C- CHIEF GENERAL MANAGER (FINANCE) INCHARGE-BANGALORE
- GM(FIN)-GENERAL MANAGER (FINANCE),BANGALORE
- DGM (F&A,TAX & TREAS)-DEPUTY GENERAL MANAGER(FINANCE & ACCOUNTS, TAX TREASURY), BANGALORE
- SM(FIN)- SENIOR MANAGER (FINANCE), MANGALORE
- DGM (NDO)-DEPUTY GENERAL MANAGER-INCHARGE-NEW DELHI OFFICE
- DGM(VIG) DEPUTY GENERAL MANAGER (VIGILANCE), BANGALORE
- DGM (IT)-DEPUTY GENERAL MANAGER (INFORMATION TECHNOLOGY), BANGALORE
- SR.MGR(LAW)- SENIOR MANAGER (LAW), BANGALORE
- GM I/c (MATRLS)-GENERAL MANAGER INCHARGE (MATERIALS), BANGALORE
- DGM I/c (COMM)-DEPUTY GENERAL MANAGER INCHARGE(COMMERCIAL), BANGALORE
- DGM(COMML)-DEPUTY GENERAL MANAGER (COMMERCIAL), MANGALORE
- AGM I/c(STORES), ASSISTANT GENERAL MANAGER INCHARGE(STORES), MANGALORE
- TO to CMD- TECHNICAL OFFICER TO CMD
- GM(HR)- GENERAL MANAGER (HUMAN RESOURCES), BANGALORE
- AGM(HR&A), BFU-ASSISTANT GENERAL MANAGER (HUMAN RESOURCE & ADMINISTRATION), BLAST FURNACE UNIT, MANGALORE
- SR MGR-(HR&C), MLR- SENIOR MANAGER (HUMAN RESOURCE & COORDINATION), PELLET PLANT UNIT, MANGALORE
- DM (RAJBHASHA), DEPUTY MANAGER -(RAJBHASHA)-HINDI CELL,BANGALORE
- CS- COMPANY SECRETARY, BANGALORE